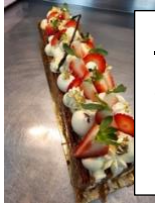


# PANETERIE



**DESCRIPTION: Napoleon**

Caramelized Puff Pastry build with a light Vanilla cream.  
\*Salted Caramel Sauce ; \*Lemon ; Strawberry bomb ; \*Raspberry

Mini : \$2.25. /4-5 PPL: \$33.75.  
Individual: \$7.50 /6-8 PPL: \$50.60.  
2-3 PPL: \$18.75. / 8-10  
PPL: \$64.  
3-4 PPL: \$26.25. /10-12 PPL:



**DESCRIPTION: Blueberry Tart**

Based on Chef's Sugar Dough, Vanilla Pastry cream, blueberries, baked. Then topped with fresh blueberries.

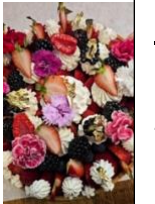
Mini : \$1.90. /4-5 PPL: \$30.35.  
Individual: \$6.75. /6-8 PPL: \$45.55.  
2-3 PPL: \$16.85. / 8-10  
PPL: \$57.70.  
3-4 PPL: \$23.60. /10-12 PPL:



**DESCRIPTION: Lemon Meringue Tart**

Based on Chef's Sugar Dough, with Lemon Crèmeux, Italian Meringue. From another world.

Mini : \$2.40. /4-5 PPL: \$31.  
Individual: \$6.90. /6-8 PPL: \$46.50.  
2-3 PPL: \$17.25. / 8-10  
PPL: \$59.  
3-4 PPL: \$24. /10-12 PPL: \$71.40.



**DESCRIPTION: Strawberry Tart Bouquet**

Based on Chef's Sugar Dough, with Strawberry or Raspberry cream.  
Only Strawberries or Mixed berries or Tutti Frutti.  
Topped with Vanilla or Chocolate or Pistachio Chantilly.

Mini : \$2.50. /4-5 PPL: \$34.80.  
Individual: \$7.75. /6-8 PPL: \$52.  
2-3 PPL: \$19.35. / 8-10  
PPL: \$66.  
3-4 PPL: \$27. /10-12 PPL: \$80  
Flowers \$14



**DESCRIPTION: Exotic Bar**

Based on our Coconut Crunch, Coconut Dacquoise, Passion Fruit Crèmeux, Coconut Mousse, Mango Glaze.

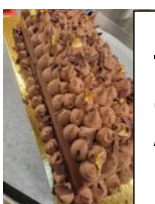
Mini : \$2.25. /4-5 PPL: \$33.75.  
Individual: \$7.50. /6-8 PPL: \$50.60.  
2-3 PPL: \$18.75. / 8-10  
PPL: \$64.  
3-4 PPL: \$26.25. /10-12 PPL:



**DESCRIPTION: Le Scandal**

Based on a Chocolate Crunch, with a layer of Chocolate lady finger spread with Chef's praline, Chocolate Crèmeux, Chocolate milk mousse. Chocolate and Nut Crunchy Glaze. Absolutely Scandalous.

Mini : \$2.25. /4-5 PPL: \$40.  
Individual: \$8.90. /6-8 PPL: \$60.  
2-3 PPL: \$22. / 8-10 PPL: \$76.  
3-4 PPL: \$31. /10-12 PPL: \$92



**DESCRIPTION: Chocolate Entremet (No Nuts)**

Based on a Chocolate Crunch, with a layer of Chocolate lady finger, Chocolate Crèmeux, Chocolate milk mousse. Chocolate Glaze. Absolutely Delicious.

Mini : \$2.10. /4-5 PPL: \$37.10.  
Individual: \$8.25. /6-8 PPL: \$52.  
2-3 PPL: \$20.60. / 8-10  
PPL: \$68.  
3-4 PPL: \$28.85. /10-12 PPL: \$82

# PANETERIE



**DESCRIPTION: Pavlova**

Based on French Meringue with different possible association.  
Exotic: Passion fruit confit, Coconut Chantilly, Mango, Pineapple  
Lime, Lemon  
Seasonal: Fresh Peaches, Rosemary Chantilly. Raspberry Confit  
Classic: Verbena Chantilly, Raspberry Confit, Fresh Raspberry.

Individual: \$7.75. /6-8 PPL: \$52.  
2-3 PPL: \$19.30. / 8-10 PPL: \$66.  
3-4 PPL: \$27. /10-12 PPL: \$80.  
4-5 PPL: \$34.80. / Flowers: \$14



**DESCRIPTION: Fraisier**

Based on a Dacquoise (Nuts) with Vanilla Diplomate cream.  
Fresh Strawberry.  
Can be done with a Lady Finger cake to avoid nut content.

6-8 PPL: \$64.  
8-10 PPL: \$81.  
10-12 PPL: \$99.  
Flowers: \$14.



**DESCRIPTION: Cheesecake with Raspberry coulis**

Based on deconstructed chef sugar dough.  
With a delightful cream cheese cream,  
served with a Raspberry coulis.

Slice: \$6.75.  
Whole: \$42. Serve 6-8 PPL.

**DESCRIPTION : Tiramisu**

Lady Finger Cake. Soaked with Espresso and light syrup. Amaretto.  
A precious mascarpone cream.  
Topped with a thin layer of pure Cocoa powder.

Individual: \$5.50.  
Whole: \$38. Serve 6-8 PPL.



**DESCRIPTION: Dry fruit & Red Wine Tart.**

Based on Chef's Pie Dough, with Frangipane,  
Dattes, Dry Apricot, Prune, Dry Fig, Shredded Almonds & Pistachios  
Topped with Red Wine Glaze. Another Must Try.

Slice: \$7.25  
Whole: \$41. Serve 6-8 PPL.



**DESCRIPTION: Éclairs and Cream Puffs**

Puff dough filled with Chocolate Crèmeux, or Coffee Crèmeux \$7.50  
Puff dough filled with Praliné, Crushed Hazelnuts & Almonds and Mousseline Praliné. \$8.75  
Cream puffs, puff dough filled with Chef's Vanilla Diplomate cream. \$2.50



**DESCRIPTION : Choux à la crème #Cream Puffs**

Puff dough filled with Chef's Vanilla Diplomate cream. \$2.50.  
Price change for orders greater than 30 Unit.